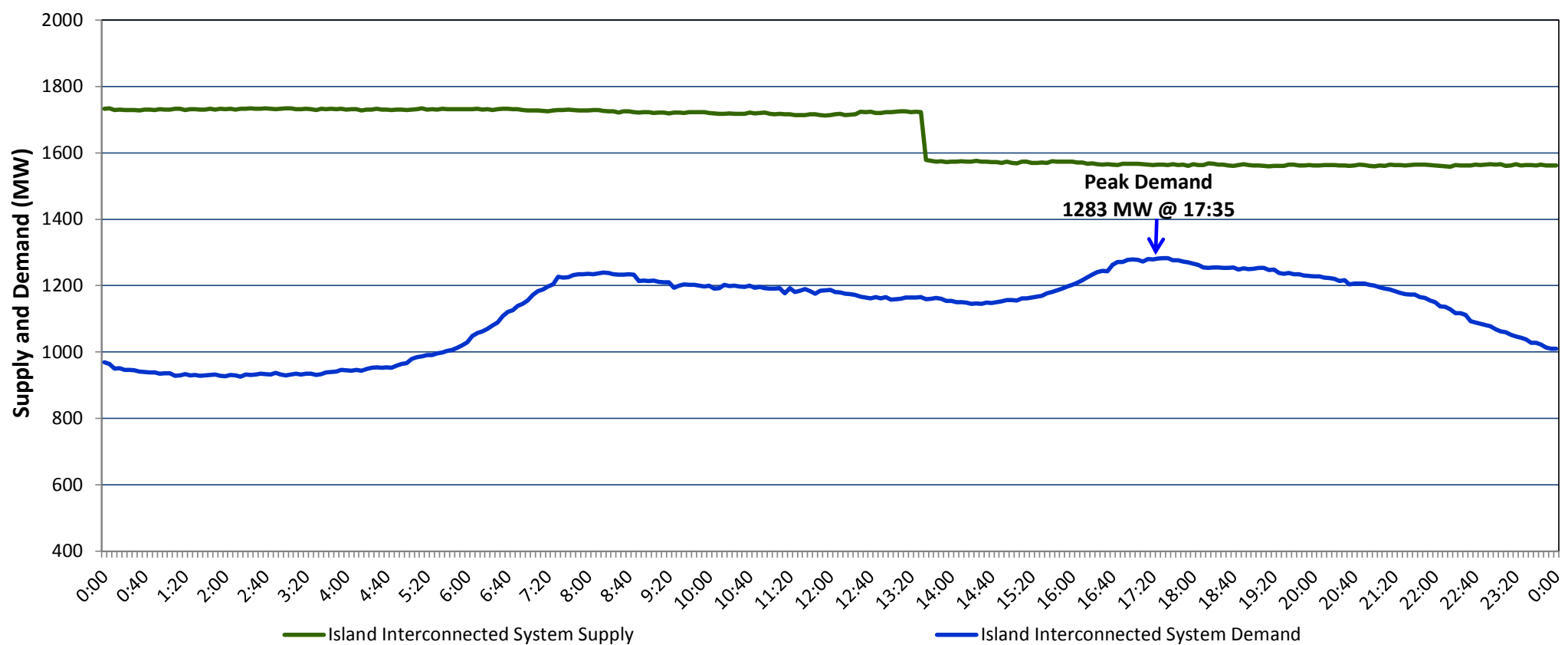


**Newfoundland Labrador Hydro (NLH)
Supply and Demand Status Report Filed Thursday, November 16, 2017**

**Section 1
Island Interconnected System Supply and Demand
Actual 24 Hour System Performance For Wednesday, November 15, 2017**



Supply Notes For November 15, 2017

- 1,2
- A As of 1510 hours, November 04, 2017, Bay d'Espoir Unit 1 unavailable (76.5 MW).
 - B As of 1510 hours, November 04, 2017, Bay d'Espoir Unit 2 unavailable (76.5 MW).
 - C As of 1800 hours, November 04, 2017, Holyrood Unit 2 available at 150 MW (170 MW).
 - D As of 0939 hours, November 08, 2017, Stephenville Gas Turbine available at 25 MW (50 MW).
 - E As of 0608 hours, November 13, 2017, Hardwoods Gas Turbine unavailable due to planned outage (50 MW).
 - F As of 0710 hours, November 14, 2017, Holyrood Unit 3 available at 130 MW (150 MW).
 - G At 1335 hours, November 15, 2017, Holyrood Unit 1 unavailable 145 MW (170 MW).

**Section 2
Island Interconnected Supply and Demand**

Thu, Nov 16, 2017	Island System Outlook ³	Seven-Day Forecast	Temperature (°C)		Island System Daily Peak Demand (MW)	
			Morning	Evening	Forecast	Adjusted ⁷
Available Island System Supply: ⁵	1,685 MW	Thursday, November 16, 2017	1	1	1,325	1,230
NLH Generation: ⁴	1,400 MW	Friday, November 17, 2017	1	3	1,275	1,180
NLH Power Purchases: ⁶	100 MW	Saturday, November 18, 2017	4	4	1,220	1,126
Other Island Generation:	185 MW	Sunday, November 19, 2017	5	4	1,165	1,071
Current St. John's Temperature:	-1 °C	Monday, November 20, 2017	8	3	1,195	1,101
Current St. John's Windchill:	-8 °C	Tuesday, November 21, 2017	0	1	1,375	1,279
7-Day Island Peak Demand Forecast:	1,375 MW	Wednesday, November 22, 2017	4	11	1,115	1,022

Supply Notes For November 16, 2017

- 3
- H At 0012 hours, November 16, 2017, Holyrood Unit 1 available at 145 MW (170 MW).

- Notes:
- Generation outages for running and corrective maintenance are included. These are not unusual for power system operations. They generally do not impact customer supply. The power system operators schedule outages to system equipment whenever possible to coincide with periods when customer demands are low and sufficient supply reserves are available. However, from time to time equipment outages are necessary and reserves may be impacted.
 - Due to the Island Interconnected System being isolated from the larger North American grid, when there is a sudden loss of large generating units some customer's load must be interrupted for short periods to bring generation output equal to customer demand. This automatic action of power system protection, referred to as under frequency load shedding, is necessary to ensure the integrity and reliability of system equipment. Under frequency events typically occur 5 to 8 times per year on the Island Interconnected System and the resultant customer load interruptions are generally less than 30 minutes.
 - As of 0800 Hours.
 - Gross output including station service at Holyrood (24.5 MW) and improved NLH hydraulic output due to water levels (35 MW).
 - Gross output from all Island sources (including Note 4).
 - NLH Power Purchases include: CBPP Co-Gen, Nalcor Exploits, Rattle Brook, Star Lake, Vale capacity assistance (when applicable), and Wind Generation.
 - Adjusted for CBP&P interruptible load and the impact of voltage reduction, when applicable.

**Section 3
Island Peak Demand Information
Previous Day Actual Peak and Current Day Forecast Peak**

Wed, Nov 15, 2017	Actual Island Peak Demand ⁸	17:35	1,283 MW
Thu, Nov 16, 2017	Forecast Island Peak Demand		1,325 MW

- Notes: 8. Island Demand is supplied by NLH generation and purchases, plus generation owned and operated by Newfoundland Power and Corner Brook Pulp & Paper (Deer Lake Power, DLP).